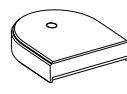




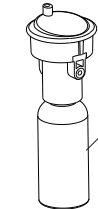
FLORIHANA

Microparticles Diffuser User Manual

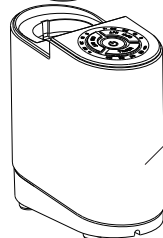
FLORIHANA DISTILLERIE
Les grands prés, 06460 Caussols, France
+33 (0) 4 93 09 06 09
www.florihana.com



Diffuser Atomizer
Attachment



Essential Oil
Bottle 5g or 15g



Main Body

01

CLEANING

The only part that needs to be cleaned is the Diffuser Atomizer Attachment. In order to do so please use alcohol to clean the part that goes inside of the essential oil bottle.

02

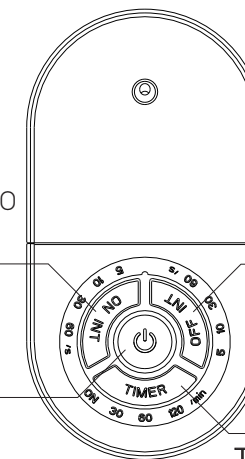
ON INT

Duration of the
diffusion: 5, 10, 30
or 60 seconds

OFF INT

Duration of the
standby: 5, 10,
30 or 60
seconds

Power Button



Timer Button

Automatic shut-off
system after: 30, 60,
120 min.

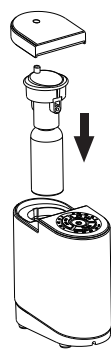
OPERATION

03

①



②



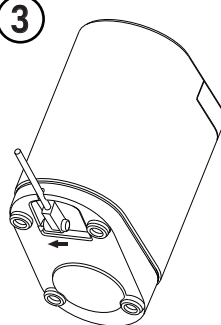
① Screw the essential oil bottle to
the diffuser atomizer attach-
ment.

② Mount the assembled unit
(bottle + atomizer) to the
main body (see illustration).

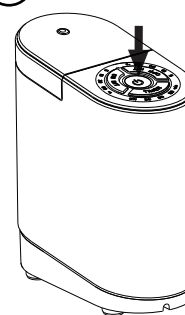
OPERATION

04

③



④



③ After assembling, plug
the cable to the main
body and then to the
power outlet or a USB
port.

④ Press "POWER" to start the
diffusion.
To customize your settings you can
choose both the Duration of the
diffusion and the standby.

CUSTOM DIFFUSION MODE

05

This diffuser has 3 diffusion modes (High, regular and low).

Press the power button once to start the device. The first
automatic mode is the "high diffusion mode".

Press the power button once more to enter the "regular diffusion
mode"

Press the power button once more to enter the "low diffusion
mode"

Press the power button once more turn off the device.

SPECIFICATIONS

Size _____ 120mm(L)* 63mm(W)* 137mm(H)

Weight _____ 530g

Input _____ AC 100-240V 50/60Hz

Output _____ DC 5V 1A

Length of the cable _____ 100cm

Surface area _____ 100m²

Materials _____ Aluminium alloy, PP

Accessories _____ USB cable, adapter, user manual, 10ml bottle